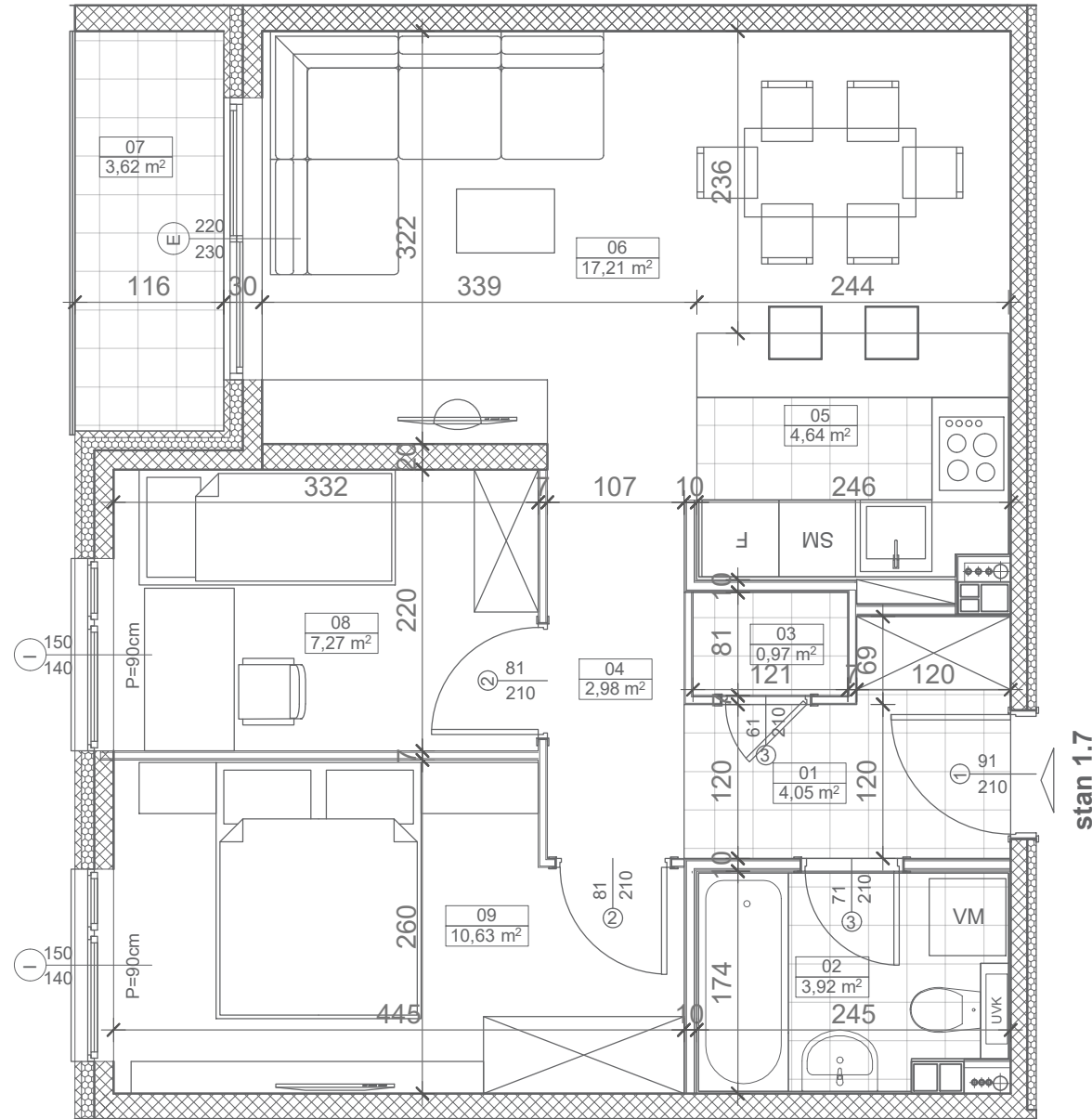


## OSNOVA STANA



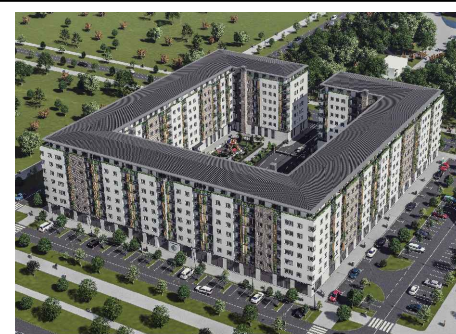
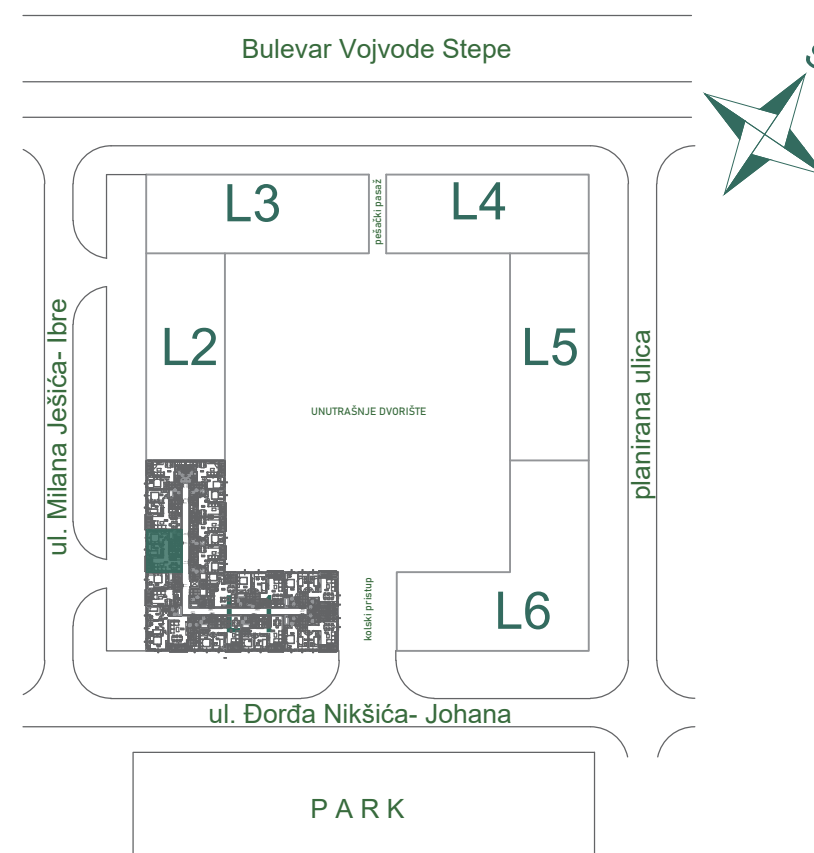
## POVRŠINE

Broj	Prostorija	Površina	Redukovana površina (m <sup>2</sup> )
01	Predsoblje	4,05	4,05
02	Kupatilo	4,04	3,92
03	Ostava	0,97	0,97
04	Hodnik	2,98	2,98
05	Kuhinja	4,71	4,64
06	Dnevni boravak	17,21	17,21
07	Lođa	3,62	3,62
08	Soba	7,27	7,27
09	Soba	10,63	10,63
NETO		55,48 m <sup>2</sup>	55,29 m <sup>2</sup>

## 3D PRIKAZ STANA



## SITUACIONI PLAN



ZGRADA

**L1**

STAN

**1.7**

SOBNOST

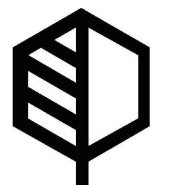
**TROSOBAN**

SPRATOVI

**I, II, III,  
IV, V, VI**

POVRŠINA

**55,29 m<sup>2</sup>**



**PARKNOVI**  
RESIDENCE